

Northeast-A4 Laurel Highlands (#527)
Pittsburgh, PA
2014-01-16

Current Year-to-Date: 1625 of 2900
Last Year-to-Date: 1450 of 2500

Composite Score (2900 max)



Overall status

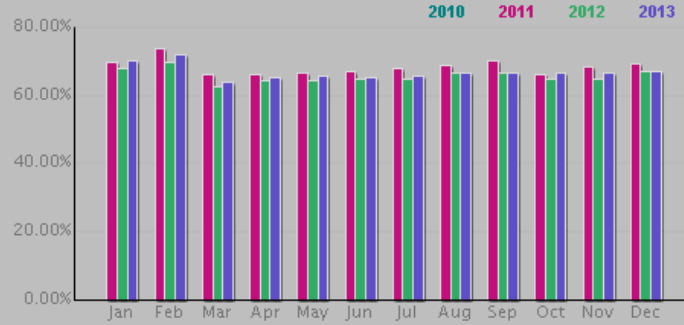


Fiscal Management	Fundraising
Endowment	Market Share 3.74%
Membership Growth 1.12%	Youth Retention .03%
Cub Scout Advancement 1.04%	Boy Scout Advancement 1.25%
Cub Scout Camping -24.37%	Boy Scout Camping 4.86%
Community Service 0.3 hrs	Youth-Serving Executives -2
Commissioner Service -5.97%	Unit Visitations 0.98%
Voice of the Scout 7.25%	Council Leadership
District Leadership -3.3	Unit Leadership 1.58%

MEMBERSHIP: Youth Retention B

Performance Standard

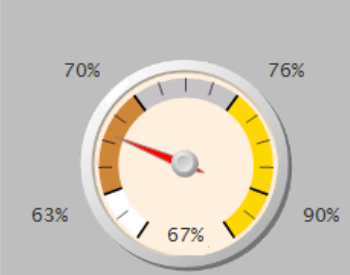
Traditional Youth Retention



0.03%

Determined Standard

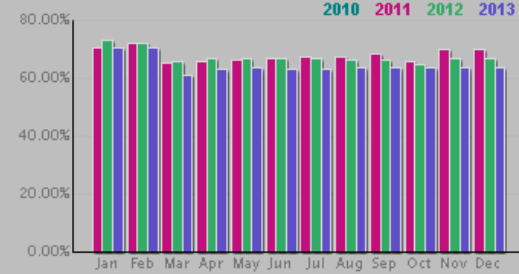
Traditional Retention:



67%

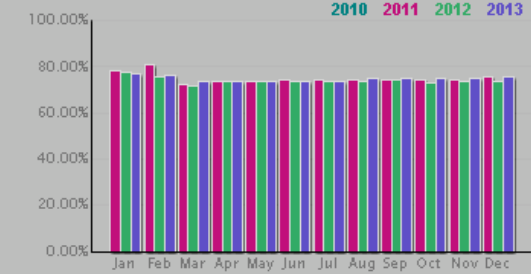
Comparative Standard Details

Cub Scouting Retention



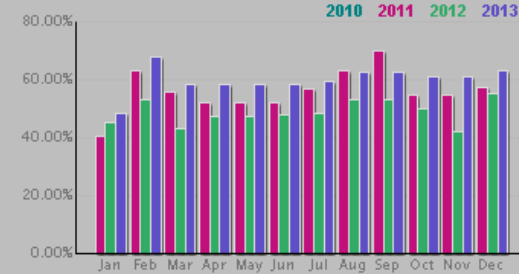
-2.96%

Boy Scouting Retention



1.63%

Venturing Retention



7.61%

Council Score: BRONZE = 75 points

This council has received bronze for its ability to maintain or improve the retention rate of traditional members.

The calculation

This criterion measures the number of traditional youth (Lone Cub Scouts, Cub Scouts, Lone Boy Scouts, Boy Scouts, Varsity Scouts, Venturers, and Sea Scouts) who remain registered one year later. The performance standard is a factor in how a council's score may be decided.

Level	Determined standard	Performance standard
Gold	76% retention	or 70% and 2 point increase
Silver	70% retention	or 63% and 2 point increase
Bronze	63% retention	or 2 point increase

Additional detail

Explorers are not included retention rate calculations. Data feeds for this criterion occur on the 8th of each month.

Gold Performers: Achievers within only the Determined Standard gold range

- | | | | |
|----------------------------|-------------------------------|-----------------------------|--------------------------------|
| Alameda Council BSA | National Capital Area Council | Columbia-Montour | Ore-Ida Council 106 - BSA |
| Ventura County Council | Housatonic | Mount Baker Council, BSA | Pacific Skyline Council |
| Verdugo Hills Council | Westchester Putnam | Grand Teton Council | Blue Mountain Council |
| Rip Van Winkle Council | Nashua Valley Council | Long Beach Area Council | Suffolk County Council Inc |
| Monmouth Council, BSA | Hudson Valley Council | Trapper Trails | Utah National Parks |
| San Gabriel Valley Council | Grand Canyon Council | Piedmont Council | Central New Jersey Council Inc |
| Juniata Valley Council | Great Salt Lake Council | Silicon Valley Monterey Bay | Redwood Empire Council |
| Snake River Council | Potawatomi Area Council | Chester County Council | Grand Columbia Council |